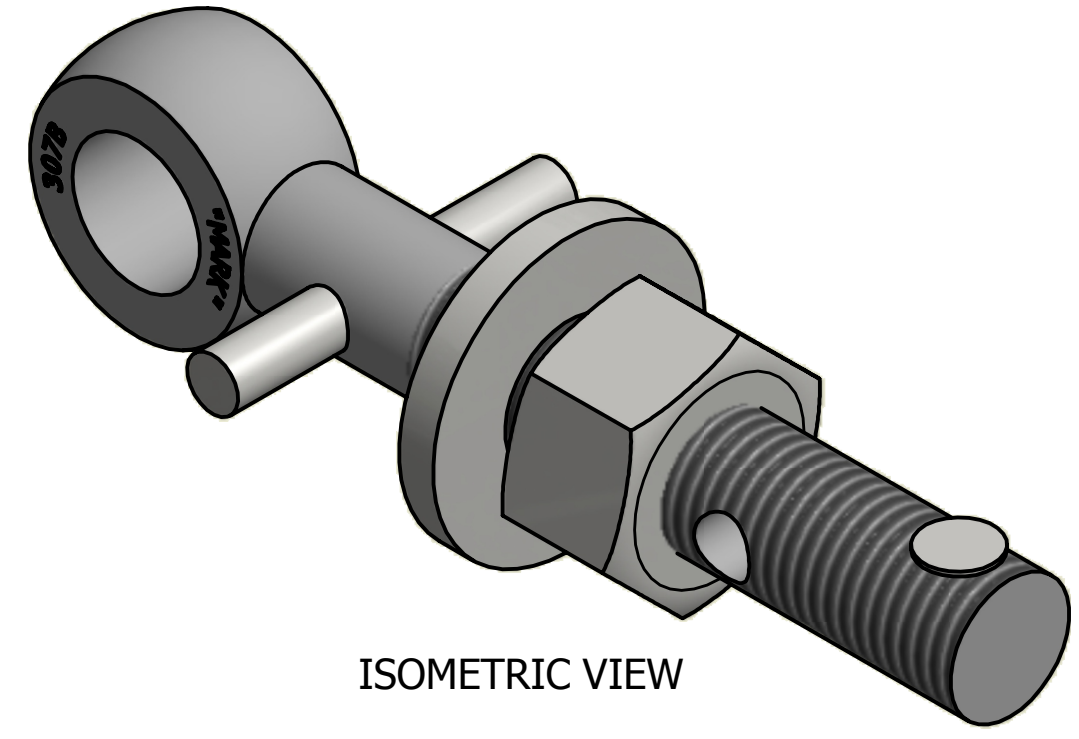
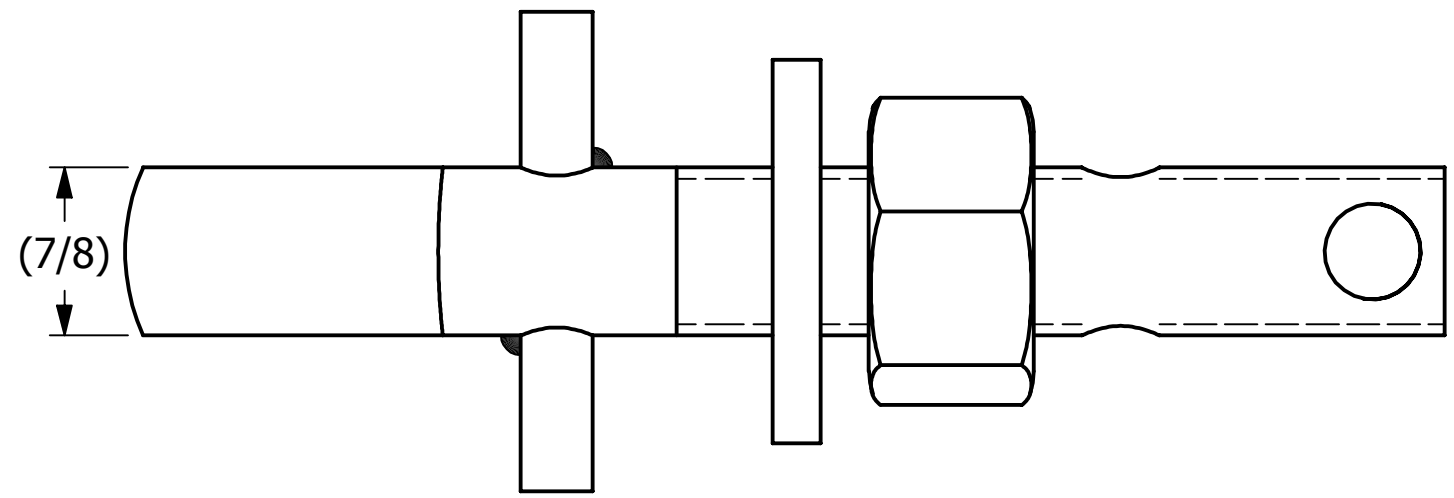
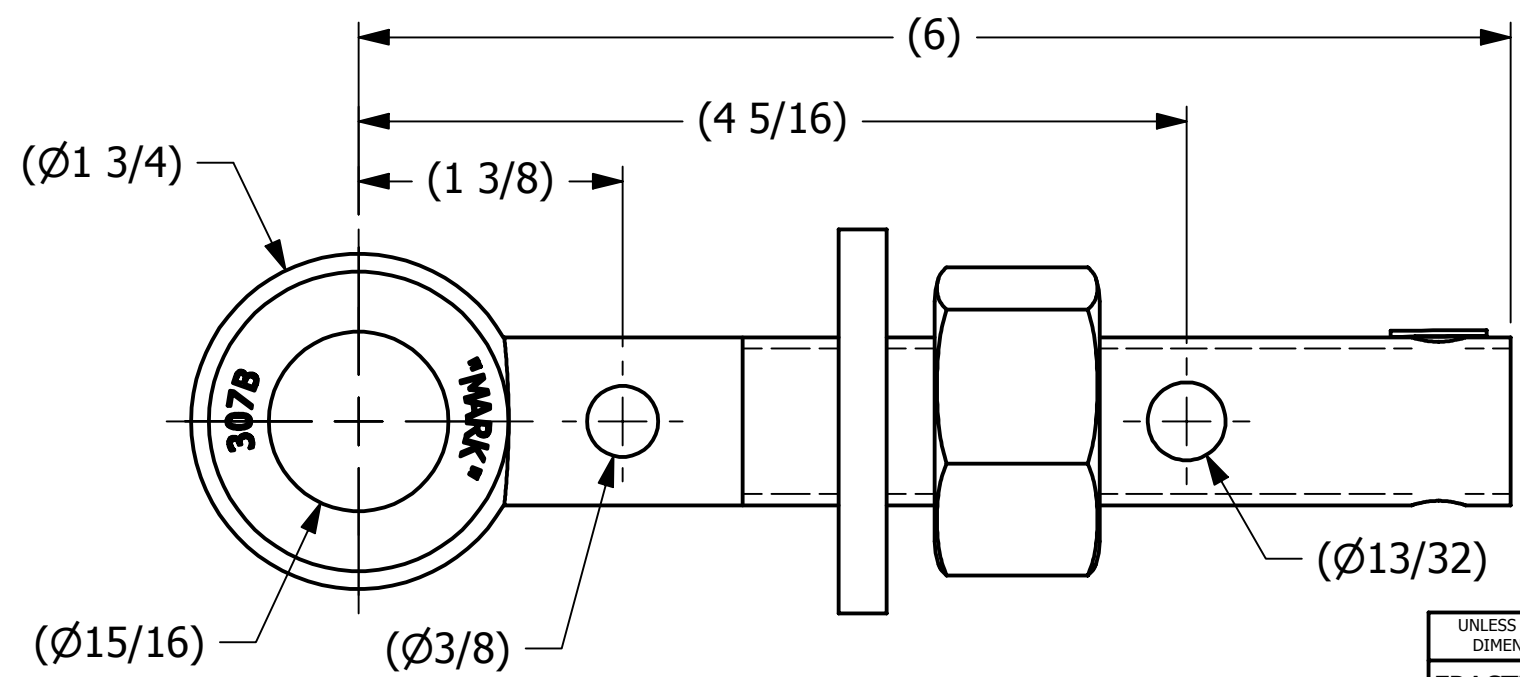


SALES DRAWING

SALES DRAWING



ISOMETRIC VIEW



REV	BY	DATE	DESCRIPTION
D	BRG	12-9-08	UPDATED EYEBOLT MATERIAL
C	CHL	6-10-02	CHANGED MATERIAL OF WASH78T TO CS
B	CHL	11-26-01	REPLACED SN14S WITH A16204
A	FOD	6-7-99	ITEM #1 WAS EBR786HP AND UPDATED DRAWING WITH NEW STANDARDS

UNLESS OTHERWISE SPECIFIED DIMENSIONAL TOLERANCES		DRAWN BY:	TJN
FRACTIONAL:	±1/16	CHECKED BY:	
X.XX:	±.03	PROTOTYPE BY:	TJN
X.XXX:	±.015	PROTOTYPE DATE:	
ANGULAR:	±1°	APPROVED FOR PRODUCTION BY:	TJN
THIS PRINT, PROPERTY OF SALCO PRODUCTS INC., CONTAINS PROPRIETARY INFORMATION AND MUST NOT BE COPIED, REPRODUCED, OR USED DETRIMENTALLY TO OUR INTEREST.		PRODUCTION DATE:	2/5/1993
THIRD ANGLE PROJECTION			

PART NAME: <b>EYEBOLT ASSEMBLY 7/8"X6"</b>		
MATERIAL: <b>CARBON STEEL</b>		
PROJECT #:	SHEET #: <b>1 OF 1</b>	SCALE: <b>1:1</b>
DRAWING #: <b>B5381</b>	PART #: <b>EB786XHAP</b>	

B

B

A

A

4

3

2

1

4

3

2

1